

# CRANE<sup>®</sup> MERCHANDISING SYSTEMS

# SERVICE INFORMATION

## M130.0

**MODELS AFFECTED:** All BevMax 4/3/2 Model Venders.

**MODEL NUMBERS:** DN5800/3800 – BevMax 4/3/2 Venders

**Date:** 7/18/12

**RE:** Crane Merchandising Systems DN5800/3800-4 Door Seal Strip.



**Reason:** To provide installation instructions when installing the Security Coin Cup/Bag Kit. If you have any issues please contact your Crane Merchandising Systems Representative or the Technical Service Department at 803-266-5001.

**Order:** 1 – 65700530 Kit, Security Coin Cup/Bag BevMax 4/3/2

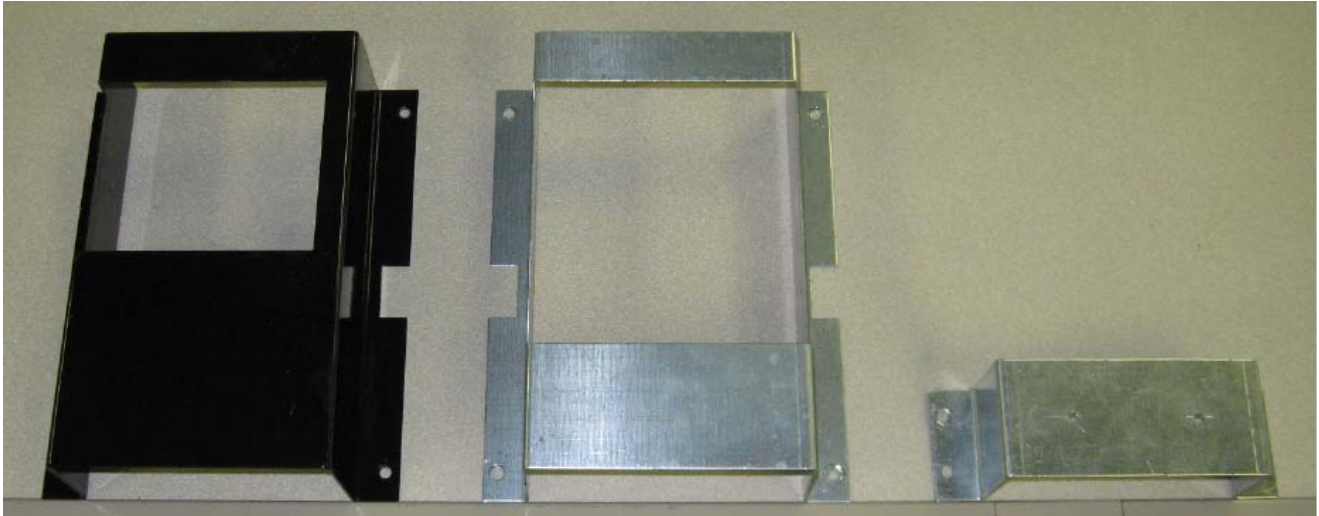
**Includes:**

Description	Part #	QTY
Coin Cup Security Plate	CR0006161	1
Coin Bag Security Plate	CR0006249	1
Screw, 8-18x1/2 Phil Pan	80030418	3
Installation Instructions	M130.x	1



# SERVICE INFORMATION

1. Unplug the vender.
2. Remove the existing Coin Cup Security Bracket from the service door. This Bracket will be different depending on the machine age.

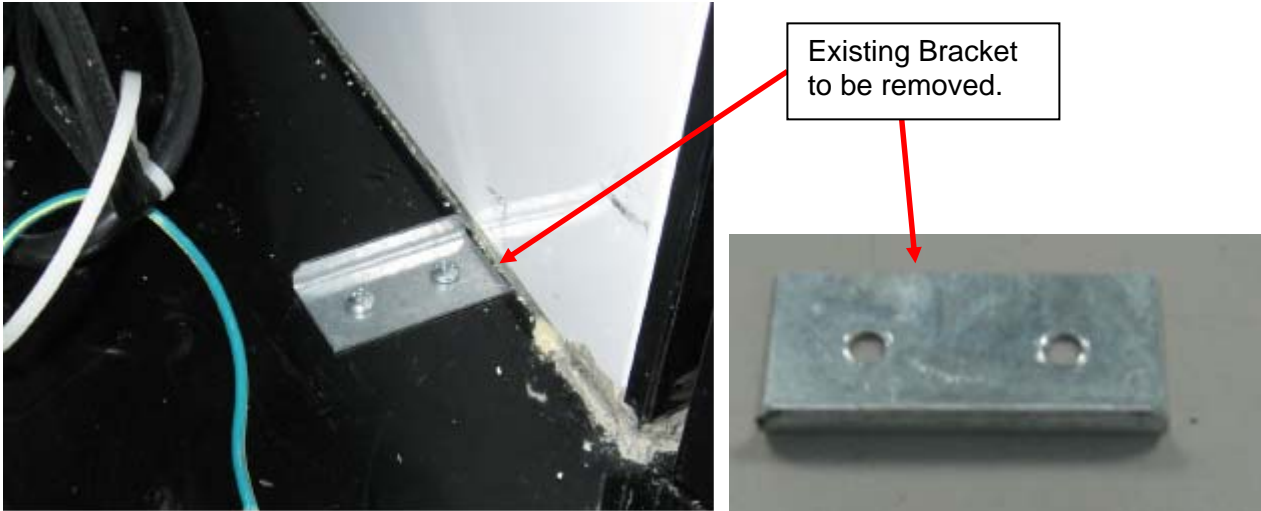


3. Install the new CR0006161 Security Coin Cup Bracket reusing the existing screws and holes from the bracket removed in step 1.



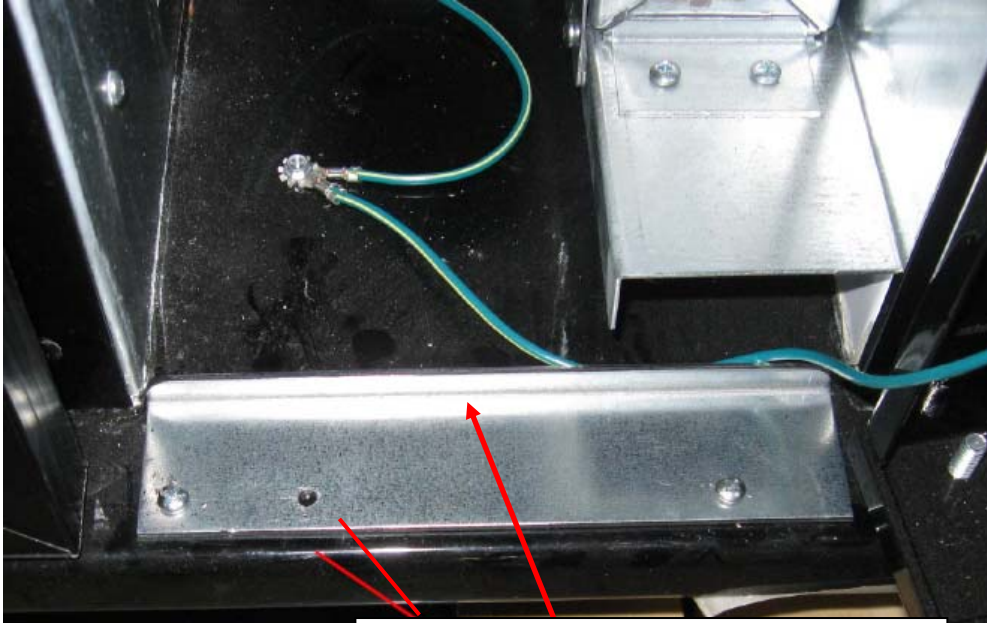
# SERVICE INFORMATION

4. Install the CR0006249 Security Coin Bag Bracket. The installation location and orientation will depend on the machine age.
  - a. BevMax 4 – New Style Coin Handling Assembly
    - Remove the existing bracket from the base.
    - Install the new security bracket reusing the screws and existing holes.



# SERVICE INFORMATION

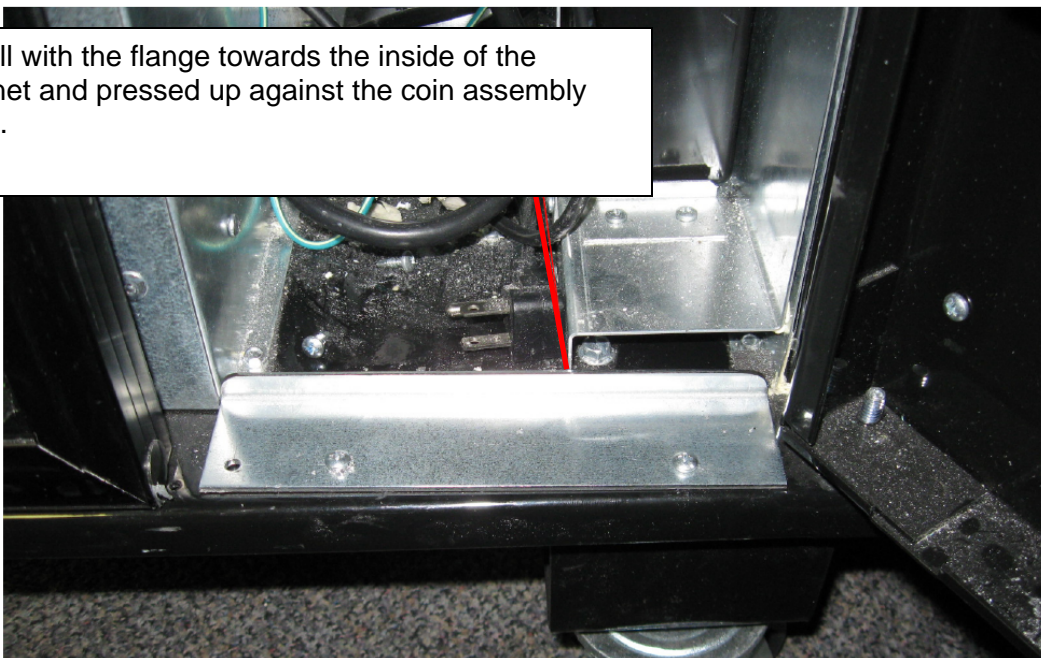
b. BevMax 4 – Old Style Coin Handling Assembly (Coin Assembly not touching base)



Install with flange towards the inside of the cabinet. The edge of the security plate is .5" inset of the front base edge.

c. BevMax 3/2

Install with the flange towards the inside of the cabinet and pressed up against the coin assembly plate.



5. Plug in vender and test for proper operation.